

OMNIWHEEL

Heavy Duty and Lightweight Multi-directional Wheels For Conveyors, Manual and Powered Transfer Systems, and non-Powered and Powered Robot Wheels

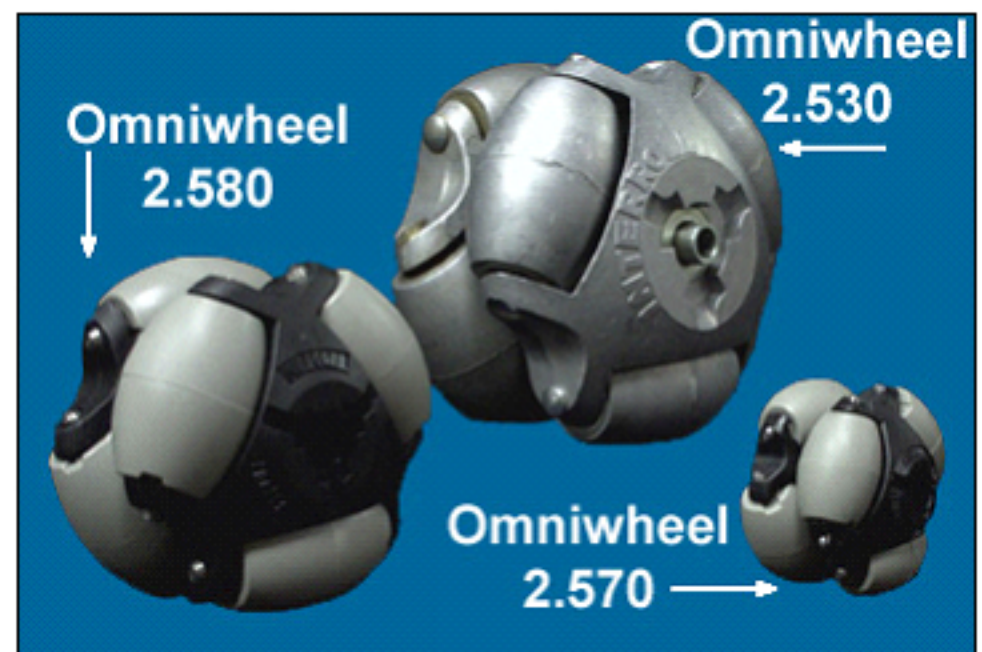
Unique Design

The omnidirectional movement of the Omniwheel comes from its unique design. The unique Omniwheels design is based upon the use of a series of free turning barrel-shaped rollers, which are mounted, in a staggered pattern around the periphery of a larger diameter main wheel. The combination of these two rolling elements provides a compact and inexpensive unit for moving heavy loads in any direction along a plane, doing so smoothly and with minimum effort. Unlike competitive transfer devices (ball transfers, swivel casters, etc.)

Applications

The omnidirectional 2530 series Omniwheels are well suited for use in heavy-duty manual or powered transfer systems.

The omnidirectional 2570 and 2580 series Omniwheels are plastic, corrosion resistant and well suited for application where dirt, dust and moisture may be present.



Omniwheels are designed to work in pairs. The 2530 series bodies are made out of aluminum, while the 2570 and 2580 bodies and barrels are made from plastic.

Omniwheels are used as omnidirectional robot wheels or powered bidirectional robot wheels.

Ordering Note:

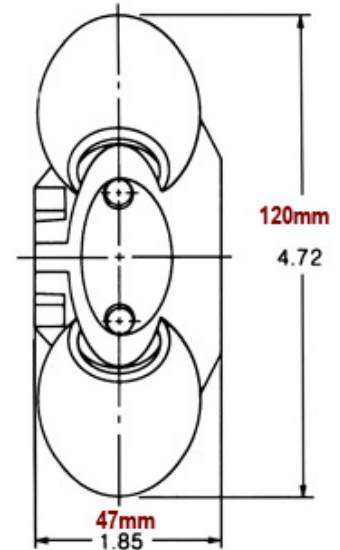
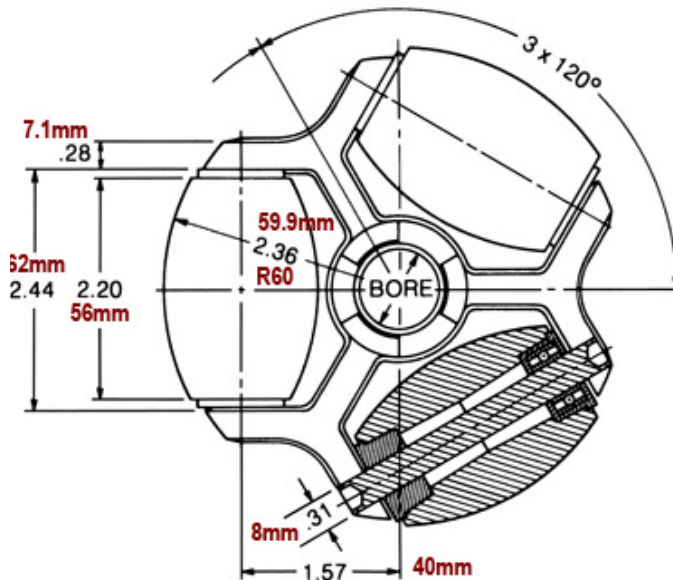
Two Omniwheels must be used together to provide support over 360° of rotation. Please order accordingly.

The 2530 Series Omniwheels

Heavy Duty Multi-directional Wheels

The 2530 Series Omniwheel Model #'s / Series:

RW8	Omni 2.538
RW12	Omni 2.532
RW16	Omni 2.537
RW27	Omni 2.530
RW28	Omni 2.538
RW32	Omni 2.532
RW37	Omni 2.538



Construction

The series 2530 Omniwheel barrels are made of die cast aluminum for manual systems; with polyurethane and rubber barrels also available for powered applications (to prevent slippage).

Mounting

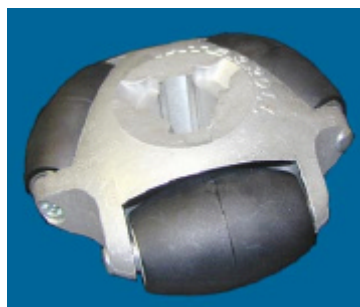
Series 2530 Omniwheels feature die cast aluminum frame with built in keys for coupling multiple units. This arrangement provides maximum mounting flexibility to suit almost any transfer requirement.

Application

The series 2530 Omniwheels are well suited for use in heavy-duty manual or powered transfer systems.

Ordering Note:

Two Omniwheels must be used together to provide support over 360° of rotation. Please order accordingly.

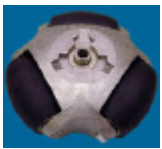


The 2530 Series Omniwheels



RW37

Diameters: 4.72", 120mm O.D. - 0.875", 22.22mm I.D. Hex
Barrel Material - Polyurethane | Barrel Bearing - Ball Bearing
Main Bearing - None
Recommended max load = 220 lbs, 99.79kg per set
Antibackup MODEL 2.538



RW12

Diameters: 4.72", 120mm O.D. - 0.315", 8mm I.D.
Barrel Material - Polyurethane | Barrel Bearing - Ball Bearing
Main Bearing - Ball Bearing
Recommended max load = 220, 99.79kg lbs per set
MODEL 2.532



RW16

Diameters: 4.72", 120mm O.D. - 0.875", 22.22mm I.D.
Barrel Material - Aluminum | Barrel Bearing - Ball Bearing
Main Bearing - None
Recommended max load = 220 lbs, 99.79kg per set
MODEL 2.537



RW8

Diameters: 4.72", 120mm O.D. - 0.875", 22.22mm I.D. Hex
Barrel Material - Polyurethane | Barrel Bearing - Ball Bearing
Main Bearing - None
Recommended max load = 220 lbs, 99.79kg per set
MODEL 2.538



RW27

Diameters: 4.72", 120mm O.D. - 0.315", 8mm I.D.
Barrel Material - Aluminum | Barrel Bearing - Ball Bearing
Main Bearing - Ball Bearing
Recommended max load = 220 lbs, 99.79kg per set
MODEL 2.530



RW28

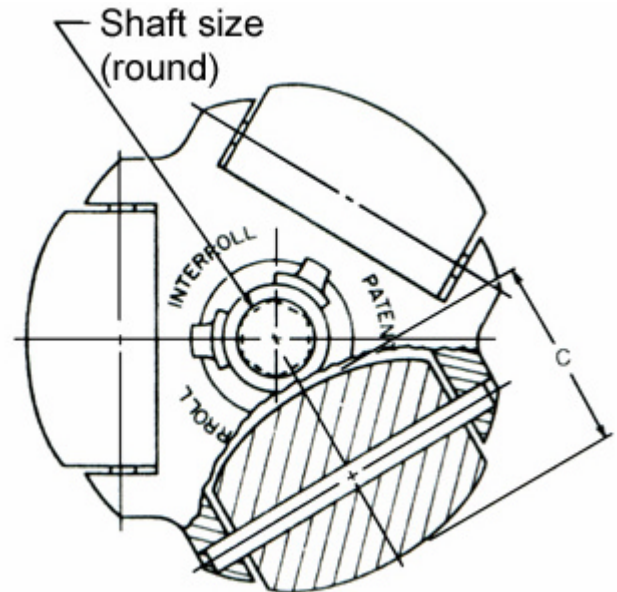
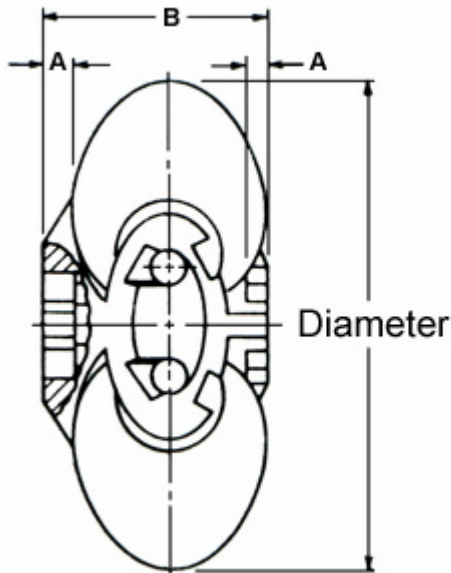
Diameters: 4.72", 120mm O.D. - 0.875", 22.22mm I.D. Hex
Barrel Material - Rubber | Barrel Bearing - Ball Bearing
Main Bearing - None
Recommended max load = 220 lbs, 99.79kg per set
MODEL 2.538



RW32

Diameters: 4.72", 120mm O.D. - 0.315", 8mm I.D.
Barrel Material - Rubber | Barrel Bearing - Ball Bearing
Main Bearing - Ball Bearing
Recommended max load = 220, lbs, 99.79kg per set
MODEL 2.532

Plastic Omniwheel



Interroll



RW9

Diameters: 1.90", **48.2mm** O.D. - 0.325", **8mm** I.D Round
 A: Overlap: 0.12", **3mm**
 B: Width: 0.85", **21.6mm**
 C: Diameter: 0.69", **17.5mm**
 Recommended max load = 25 lbs, **11.36kg** per set Model 2.570



RW29



RW10

Diameters: 3.15", **80mm** O.D. - 0.5", **12.7mm** I.D Round
 A: Overlap: 0.16", **4mm**
 B: Width: 1.34", **34mm**
 C: Diameter: 1.18", **30mm**
 Recommended max load = 75 lbs, **34.02kg** per set Model 2.580



RW30

Mounting

Mounting of Omniwheel units is both simple and direct. They may be fitted with axles or spacer bushings and installed in "U" shaped steel or aluminum channels. Alternately, they may be mounted on shafts and installed on conveyors in place of wheels or rollers, providing a convenient transfer station without the expense of designing and building transfer tables.

Application

Omniwheels are corrosion resistant and well suited for applications where dirt, dust and moisture may be present. They require no lubrication or field maintenance.

Ordering Note:

Two Omniwheels must be used together to provide support over 360° of rotation. Please order accordingly.